

School of Christian Mission

Wisconsin Conference

United Methodist Women

Together at the Table

For generations the table has been an important symbol for the gathered community. It is around the table that food is shared, discussions are held, decisions are made, crafts are created and board games are played.

Sponsored by United Methodist Women of the Wisconsin Conference

Drive-In Day: July 20, 2009

School of Christian Mission : July 21-24, 2009

at the Ramada Inn and Conference Center, Stevens Point, Wisconsin



2009 Mission Studies

"Lord, you have been our dwelling place in all generations . Before the mountains were brought forth, or ever you had formed the earth and the world, from everlasting to everlasting you are God." (Psalm 90: 1-2)

Giving our Hearts Away: Native American Survival

The purposes of this study are to (a) learn about the inter-relatedness between indigenous people and their land; (b) identify key issues affecting Native Americans in the U.S. and their causes; (c) understand and appreciate the "Give Away" culture of Native Americans; (d) lead the participants to act as responsible citizens and Christians in accompaniment and solidarity with Native Americans. Study Leader: Carol Barton, General Board of Global Ministries.

The Beauty and Courage of Sudan: Why a Dream of Peace Is Possible (2009 and 2010)

For most of the past twenty years the country of Sudan has been plagued with severe drought. Desertification is apparent in the west, where thorn bushes dominate the savanna landscape of South Darfur and are killing out the native acacia trees. The shortages of food due to drought have sometimes reached famine proportions. Climate change in Sudan is not just a looming crisis; it is the reality on the ground. And then there are the wars of Sudan: unremitting, for nearly all its history. Yet at Sudan's core is beauty. Study Leaders: Elizabeth Adjai and Reverend Ethan Larson.

Food & Faith

In this study, we explore how the bread and fruit of the vine illustrate the magnitude of God's love for us on multiple levels, how God's presence is invoked, and how the divine and the ordinary connect in mystery created by Christ and ordained by God. Study Leaders: Velma Hockenberry and Bishop Linda Lee.

Young People

Middle school through college age ladies and young men will enjoy special programming, including the opportunity to join in mission studies; share in meaningful worship, recreation, team building and volunteering; and build friendships that will last a lifetime. This is the first year we are accepting males in the youth program, so we are very excited to have you join us!

YoMiCa (Youth Mission Camp Grades 3-8)

Located at the United Methodist's beautiful Pine Lake camp, this is an exciting event that also teaches about mission. The students will participate in typical camp activities like: swimming, arts and crafts, games and getting in touch with nature. In addition, the camp mirrors the adult classes by learning about mission. Yomica begins Sunday at 3:00 PM and culminates in a Friday afternoon presentation at 2:30. See <http://www.wiumcamps.org/downloads/camps/ElementaryCamps.pdf> for more information. Leaders Tim and Kara Finley

Ramada Inn and Conference Center Stevens Point, WI July 20-24

Who?

The Wisconsin School of Christian Mission is for Everyone! Women, men, youth, laity, clergy— You!



What?

The Wisconsin School of Christian Mission is where people of all ages come together to grow in understanding of the mission of the church in the current world context through study, fellowship, worship and fun.

Where?

Ramada Inn and Conference Center

1501 N. Point Drive

Stevens Point, WI 54481

Exit I-39/51 at Exit 161 (it's on the right)

Toll-Free: 800-998-2311, local 715-341-1340

When?

SOCM:

Monday, July 20- Drive-In Day

Tuesday- Friday, July 21-24 -Week long

Yo Mi Ca (Youth Camp) Pine Lake Camp

Sunday-Friday July 19-24

Why?

School of Christian Mission is one of the best times to learn about one of the precepts of the church, mission. Not only is it educational and fun, but it is one of the best vacation bargains around!

How?

Register using the registration pages. Please fill in all the boxes. You may make as many copies of the registration form as you need OR email your registration and save a stamp.

Questions?

Contact the registrar:

Marge Lyford

608-233-5930

mclford@powercom.net



Wisconsin Conference School of Christian Mission



Drive-In Day Monday, July 20

Registration 8:15 a.m.-9:00 a.m.

Opening Plenary 9:00 a.m.

Overview of all three mission studies

Special tables at lunch for young people

Study books and reading materials available for purchase

Mission offering taken

Closing Plenary 3:15 p.m.

Cost: Drive-In Day student \$40.00 (\$45.00 after June 22)

Advanced registration is required and is transferable but not refundable. To register, use registration form on page 4. Each person needs a separate form- photocopy as needed.

Four-Day School

Tuesday, July 21- Friday, July 24

Registration 9:00 a.m.-10:30 a.m. Tuesday

Opening Plenary 10:30 a.m. Tuesday

Sending Forth 12:30 p.m. Friday

Meals: Four-Day students' meals begin with lunch on Tuesday and end with breakfast on Friday

Cost: Four-Day Students- registration, room and meals, \$295.00 (\$345.00 if received after June 22); \$395.00 for a single room (\$445.00 if received after June 22)

Commuter: Registration \$165.00 includes meals (\$215.00 if received after June 22)

Advanced registration is required and is transferable but not refundable. To register, use form page 3.

**** If you plan in arriving early, please contact the registrar.**



School of Christian Mission 2009 Registration

(Use one form per person; duplicate as needed; Please fill out entire form.)

Name _____ Email _____

Address _____ Phone (____) _____

City _____ Zip _____

District _____ Local Church/City _____ Roommate: _____

By signing here, I refuse permission to be used in any publicity pictures or young people video _____

If you do not sign, then you are giving us permission to use your image and publish for the young people, or online for publicity. Thank you.

Studies (Choose two unless you are a Young Person, then chose one)

_____ Native American Survival _____ The Beauty and Courage of Sudan _____ Food & Faith

Complete the following with the appropriate dollar amounts (see fee below)

	Adult	Young People
Double Room	_____	_____
Single Room	_____	_____
Commuter (all meals, no lodging)	_____	_____
Scholarship Requested	_____	_____
Handicap Room Requested	_____	_____

Special Dietary/Physical Needs _____

Young people Date of Birth _____ M or F Grade Completed _____

Send form with Payment to:

Marge Lyford
2417 Chamberlain Ave.
Madison, WI 53726
Phone: 608-233-5930
mcllyford@powercom.net

Make Checks Payable to
Wisconsin Conference UMW

Fees:

Drive-In Day	School of Christian Mission
All.....\$ 40	Double room\$ 295
(includes lunch)	Single room\$ 395
	Commuter (no lodging)\$ 165

Registration Due: June 22; or \$50 late fee applies.

Scholarships:

Available for first time attendees of SOCM
Young People Scholarships are available for full or partial fees
Clergy Scholarships available for newly ordained pastors

Accommodations and Meals:

- *Air-conditioned hotel rooms and meeting rooms
- *Handicap accessible hotel rooms (please request) and meeting rooms
- *Each hotel room equipped with bathroom, hair dryer, towels, sheets, iron, iron board, TV, and coffee pot
- *More information on many mission projects and learning center available with puzzles & crafts
- *Reading books available for purchase
- *Exercise room, pool and hot tub available (bring your suit, join the fun)
- *Daily breakfast buffet featuring fresh fruits, muffins, pastries, cereals, juices, and coffee; eat when you want! (as long as you stay within the hours that breakfast is offered)
- *Free Wireless Internet access in-room and throughout public areas of the hotel



Drive-In Day 2009 Registration

(Use one form per person; duplicate as needed; Please fill out entire form)

Name _____ Email _____

Address _____ Phone (____) _____

City _____ Zip _____

District _____ Local Church/City _____

By signing here, I refuse permission to be used in any publicity pictures or young people video _____

If you do not sign, then you are giving us permission to use your image and publish for the young people or online for publicity. Thank you.

Drive-In Day includes worship, an overview of all three mission studies, an offering taken for Mission Giving, lunch and closing communion. Lunch will be provided in a banquet room conveniently located across the hall. Displays, Program Resources and the Learning Center will also be available.

Complete the following with the appropriate dollar amounts (see fees page 3).

Drive-In Day _____ Adult _____ Young person _____
Special Dietary/Physical Needs _____

No refunds given, but substitutions will be accepted.

A confirmation of your registration will be mailed or emailed to you.

Send form with Payment to:

Marge Lyford

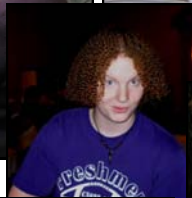
2417 Chamberlain Ave.

Madison, WI 53726

Phone: 608-233-5930

mcllyford@powercom.net

Make Checks Payable to
Wisconsin Conference UMW



See what you missed in 2008?